

OFFICE & MEDICAL  
SPACE FOR LEASE

# INA & Bailey

14701-14725 DETROIT AVENUE, LAKEWOOD, OHIO



**OFFICE & MEDICAL  
SPACE FOR LEASE**

# *Fact Sheet*

14701-14725 DETROIT AVENUE, LAKEWOOD, OHIO

<b>USE</b>	Office Usage & Medical Practices
<b>SIZE</b>	281 SF - 20,000 SF Available
<b>PARKING</b>	Attached property garage with three levels and over 1,000 parking spaces within a block of the property
<b>AMENITIES</b>	Gross Lease (included in rent): <ul style="list-style-type: none"><li>-Cleaning 5 nights a week</li><li>-Heating &amp; Air Conditioning</li><li>-Maintenance</li><li>-Professional Property Management</li></ul>
<b>ASKING RENT</b>	Office: \$13.30 - \$16.50 per RSF Medical: \$14.00 - \$16.00 per RSF
<b>LOCATION</b>	Conveniently located in the heart of Lakewood; one of Cleveland's most popular suburbs. First floor retailers include Panera Bread, Jimmy Johns, AT&T and more. Easy access to interstates and minutes away from Downtown Cleveland.



OFFICE & MEDICAL  
SPACE FOR LEASE

# Property Photos

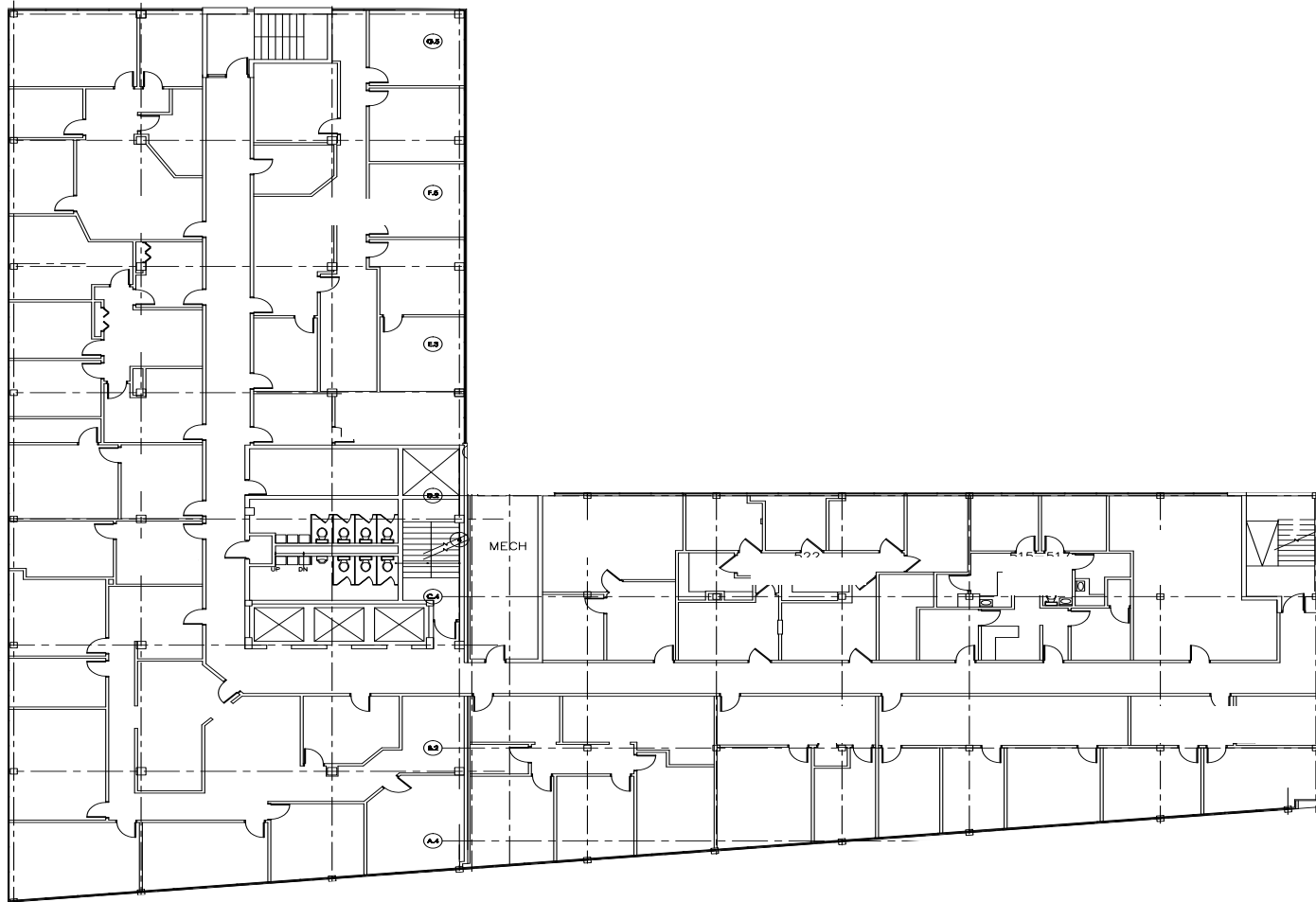
14701-14725 DETROIT AVENUE, LAKEWOOD, OHIO



OFFICE & MEDICAL  
SPACE FOR LEASE

# Typical Floor Plan

14701-14725 DETROIT AVENUE, LAKEWOOD, OHIO





OFFICE & MEDICAL  
SPACE FOR LEASE

# Location

14701-14725 DETROIT AVENUE, LAKEWOOD, OHIO





OFFICE & MEDICAL  
SPACE FOR LEASE

# Parking Map

14701-14725 DETROIT AVENUE, LAKEWOOD, OHIO





OFFICE & MEDICAL  
SPACE FOR LEASE

# Leasing

14701-14725 DETROIT AVENUE, LAKEWOOD, OHIO

## Leasing Contact:

Myrna Previte - Vice President

Office: 216-514-1400

Cell: 216-272-8335

[mprevite@kowitzrealestate.com](mailto:mprevite@kowitzrealestate.com)