

# COMMERCIAL ZONED SITES



## Property Highlights

- Commercially zoned sites available for sale, build-to-suit, or ground lease
- Up to 27 acres available
- Located near to I-71, I-76, SR 224
- Enormous development potential-retail, restaurant, office, hotel, multi-family, medical, corporate campus or headquarters

## Property Image:



## Contact Agent:

**Brad Kowit**

216.514.1400 x102

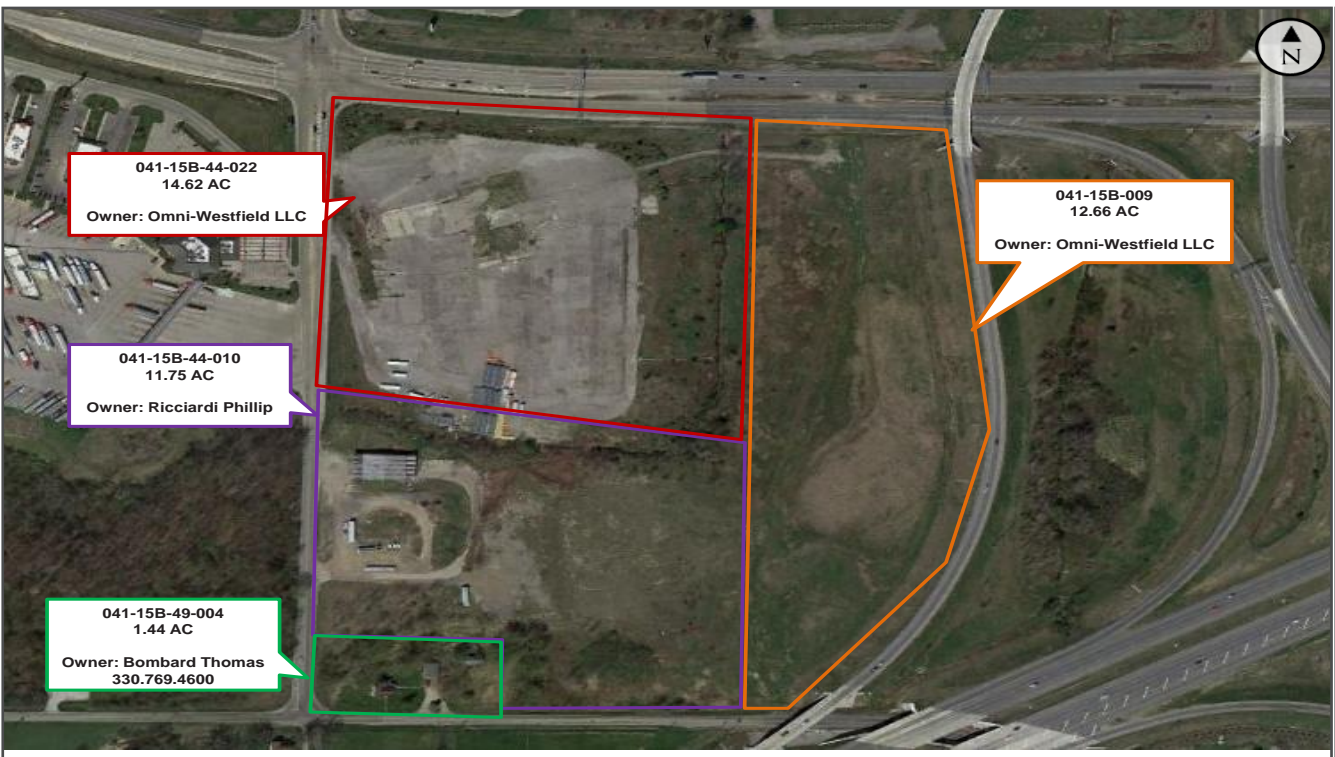
[bkowit@kowitzrealstate.com](mailto:bkowit@kowitzrealstate.com)

# COMMERCIAL SITES AERIAL & PARCEL MAP

Commercially Zoned Sites  
8919 Lake Road  
Westfield Township Ohio



PROPERTY AERIAL



PARCEL MAP

**KOWIT & COMPANY**  
REAL ESTATE GROUP

6009 Landerhaven Drive, Suite B  
Mayfield Heights, Ohio 44124  
P: 216.514.1400 | www.kowitrealestate.com

**Contact Agent:**

**Brad Kowit**  
216.514.1400 x102  
bkowit@kowitrealestate.com

# COMMERCIAL SITES AREA MAP

Commercially Zoned Sites  
8919 Lake Road  
Westfield Township Ohio

8919 Lake Rd		3 mi radius	5 mi radius	7 mi radius
Seville, OH 44273				
POPULATION	2018 Estimated Population	7,464	16,577	42,636
	2023 Projected Population	7,612	16,950	43,677
	2010 Census Population	7,138	16,141	41,427
	2000 Census Population	7,245	15,775	35,986
	Projected Annual Growth 2018 to 2023	0.4%	0.5%	0.5%
	Historical Annual Growth 2000 to 2018	0.2%	0.3%	1.0%
	2018 Median Age	45.8	44.3	41.3
HOUSEHOLDS	2018 Estimated Households	3,024	6,585	16,329
	2023 Projected Households	3,164	6,889	17,137
	2010 Census Households	2,795	6,198	15,354
	2000 Census Households	2,641	5,729	12,974
	Projected Annual Growth 2018 to 2023	0.9%	0.9%	1.0%
	Historical Annual Growth 2000 to 2018	0.8%	0.8%	1.4%
RACE AND ETHNICITY	2018 Estimated White	96.8%	96.6%	96.0%
	2018 Estimated Black or African American	0.5%	0.5%	1.0%
	2018 Estimated Asian or Pacific Islander	0.7%	0.8%	0.9%
	2018 Estimated American Indian or Native Alaskan	0.2%	0.1%	0.1%
	2018 Estimated Other Races	1.9%	2.0%	1.9%
	2018 Estimated Hispanic	1.9%	1.8%	1.9%
INCOME	2018 Estimated Average Household Income	\$96,870	\$88,368	\$88,273
	2018 Estimated Median Household Income	\$69,020	\$67,122	\$73,599
	2018 Estimated Per Capita Income	\$39,360	\$35,176	\$33,903
EDUCATION (AGE 25+)	2018 Estimated Elementary (Grade Level 0 to 8)	1.4%	1.9%	1.8%
	2018 Estimated Some High School (Grade Level 9 to 11)	4.7%	5.0%	4.5%
	2018 Estimated High School Graduate	44.1%	43.8%	37.1%
	2018 Estimated Some College	21.2%	21.6%	21.2%
	2018 Estimated Associates Degree Only	6.9%	7.3%	7.9%
	2018 Estimated Bachelors Degree Only	15.6%	14.8%	19.7%
	2018 Estimated Graduate Degree	6.1%	5.6%	7.9%
BUSINESS	2018 Estimated Total Businesses	284	581	1,157
	2018 Estimated Total Employees	7,150	9,667	15,108
	2018 Estimated Employee Population per Business	25.2	16.6	13.1
	2018 Estimated Residential Population per Business	26.3	28.5	36.9



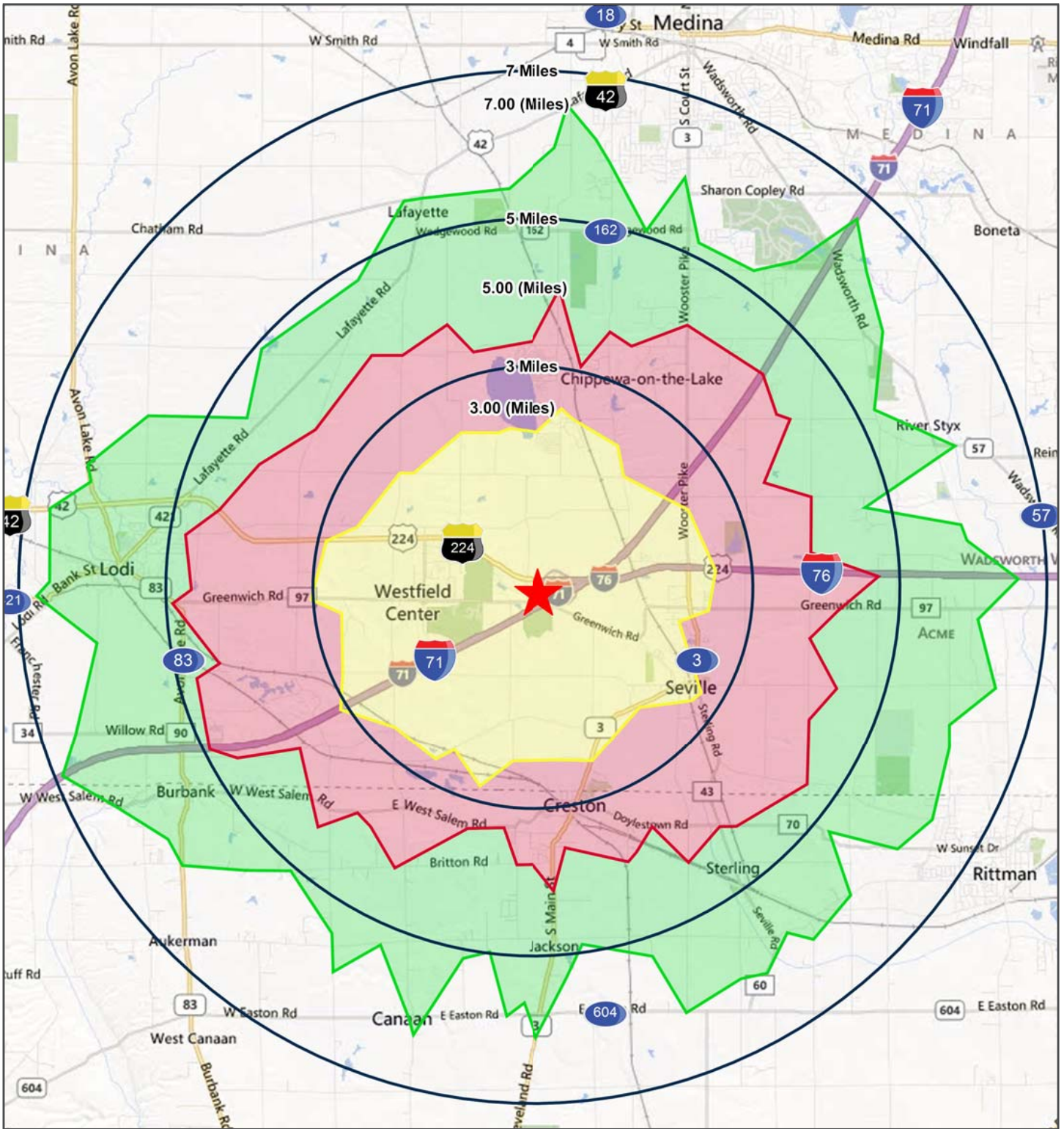
6009 Landerhaven Drive, Suite B  
Mayfield Heights, Ohio 44124  
P: 216.514.1400 | www.kowitrealestate.com

Contact Agent:

Brad Kowit  
216.514.1400 x102  
bkowit@kowitrealestate.com

# COMMERCIAL SITES AREA MAP

Commercially Zoned Sites  
8919 Lake Road  
Westfield Township Ohio



**KOWIT & COMPANY**  
REAL ESTATE GROUP

6009 Landerhaven Drive, Suite B  
Mayfield Heights, Ohio 44124  
P: 216.514.1400 | [www.kowitrealestate.com](http://www.kowitrealestate.com)

Contact Agent:

**Brad Kowit**  
216.514.1400 x102  
[bkowit@kowitrealestate.com](mailto:bkowit@kowitrealestate.com)