



**NOW OPEN: OHIO BUREAU OF MOTOR VEHICLES,  
DUBS SMOKE SHOP & GUIDING STEPS COUNSELING SERVICES**

**3,500 SF MOVE-IN READY FULLY EQUIPPED GYM AVAILABLE**

## LIBERTY CORNERS

9330-9374 MARKET SQUARE DR, STREETSBORO, OH

### THE PROPERTY

- Located at the prominent corner of State Route 43 and Market Square Drive
- Liquor license availability
- 12,989 SF total retail space available
- 3,500 SF move-in ready full equipped gym available
- 6,130 SF of office space available
- Average household income within 5 miles of location: \$107,225
- Great access to Interstate 480
- Streetsboro is a well-known access point to The Ohio Turnpike - 72,289 VPD at Turnpike entrance
- Only 15 minutes from Kent State University - 2023 Enrollment: 25,283

### DEMOGRAPHICS

#### ESTIMATED POPULATION

1 Mile: 5,539  
3 Miles: 18,610  
5 Miles: 45,400

#### DAYTIME EMPLOYEES

1 Mile: 1,905  
3 Miles: 12,246  
5 Miles: 18,945

#### AVERAGE HH INCOME

1 Mile: \$85,560  
3 Miles: \$107,225  
5 Miles: \$154,661

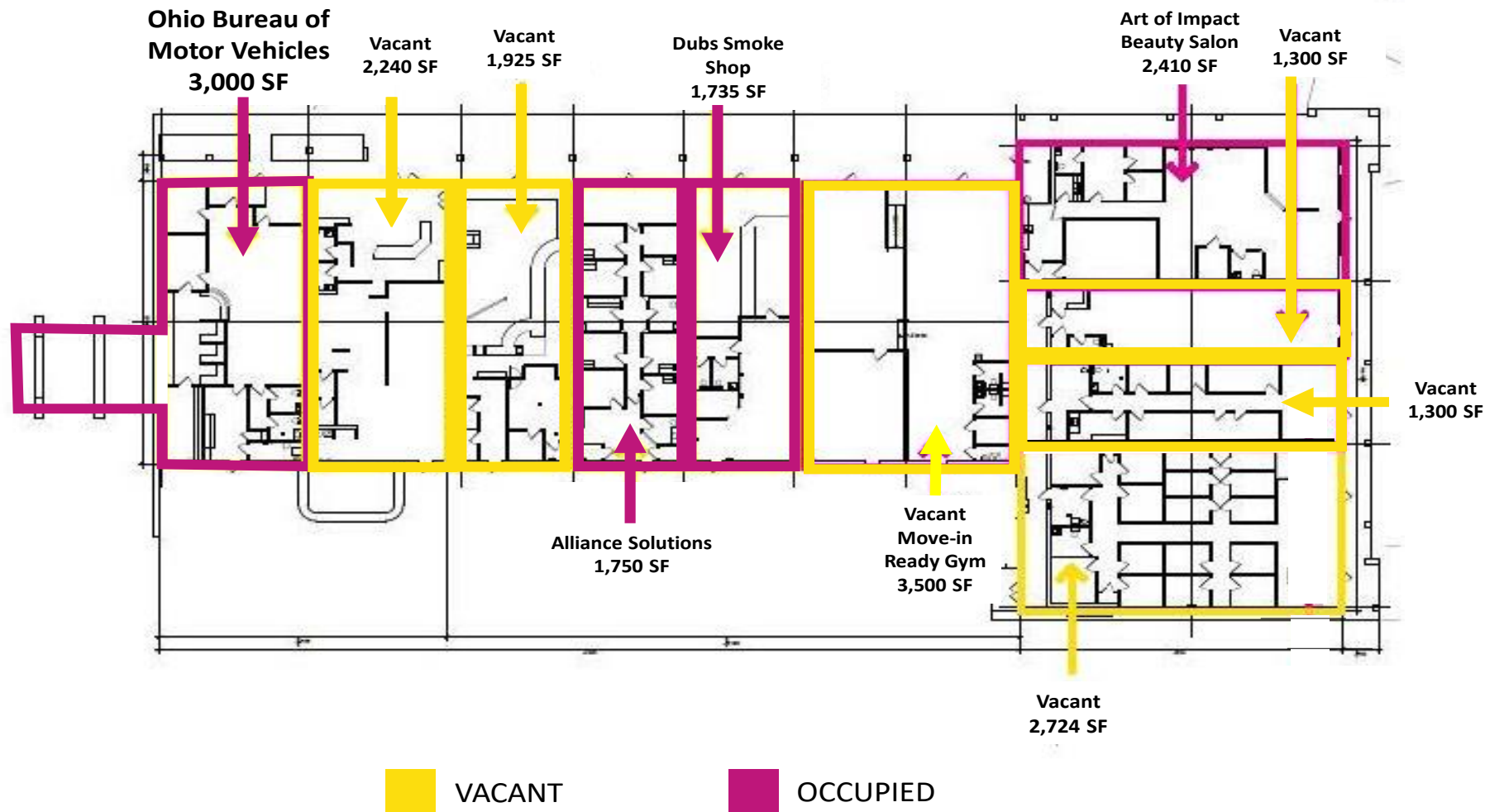
Contact Agent:

Carla Massara (216) 514-1400 ext 108 [cmassara@kowitzrealstate.com](mailto:cmassara@kowitzrealstate.com)

Kowitz & Company Real Estate Group | 216.514.1400 | [www.kowitzrealstate.com](http://www.kowitzrealstate.com)

# RETAIL SITE PLAN

9330-9374 MARKET SQUARE DR, STREETSBORO, OH



Contact Agent:

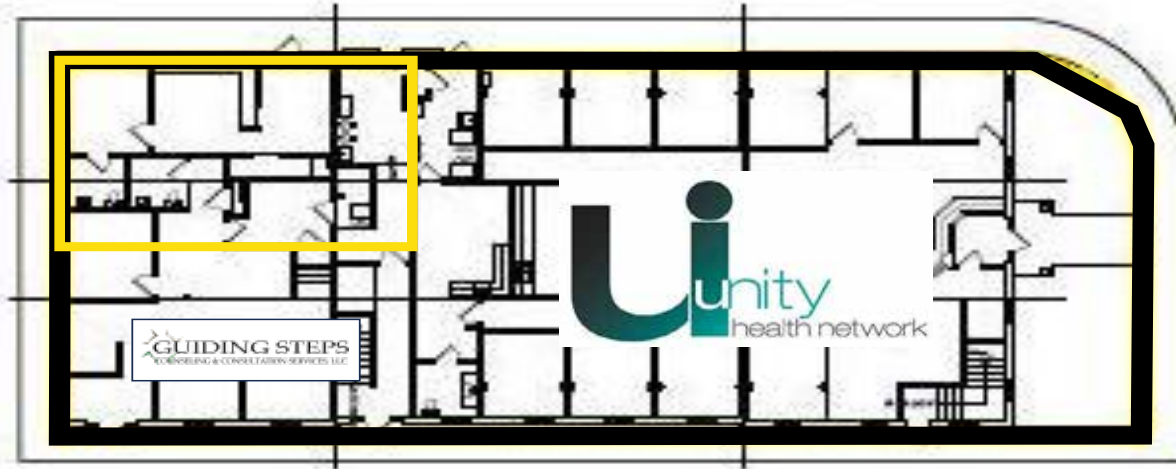
Carla Massara (216) 514-1400 ext 108 [cmassara@kowitzrealty.com](mailto:cmassara@kowitzrealty.com)

Kowitz & Company Real Estate Group | 216.514.1400 | [www.kowitzrealty.com](http://www.kowitzrealty.com)

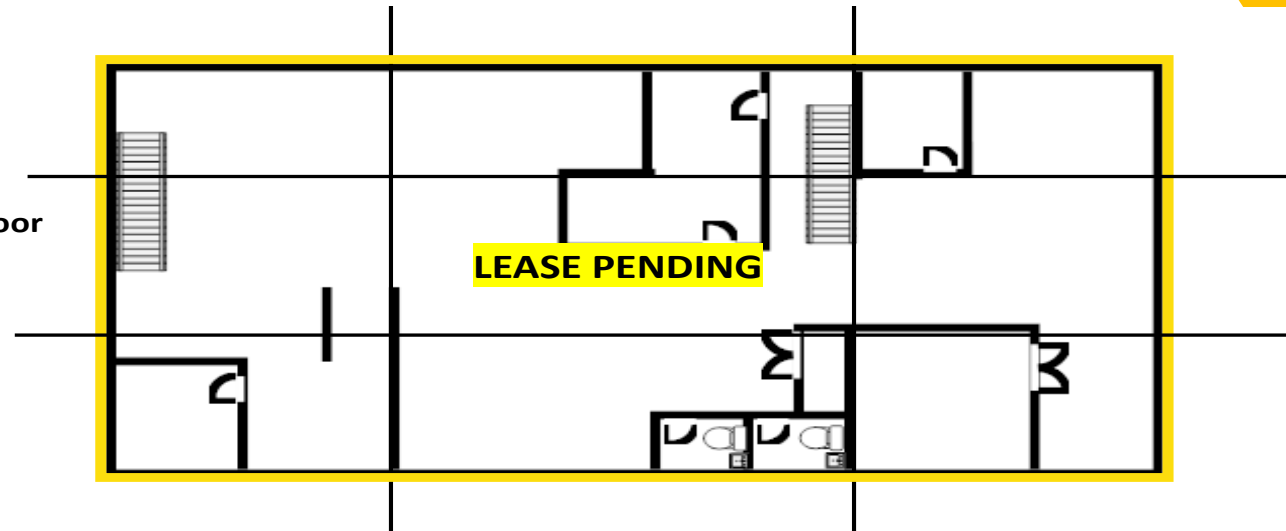
## OFFICE SITE PLAN

9330-9374 MARKET SQUARE DR, STREETSBORO, OH

**Office 1<sup>st</sup> Floor**  
**900 SF**  
**AVAILABLE**



**Office 2<sup>nd</sup> Floor**  
**5,230 SF**  
**AVAILABLE**



Contact Agent:

Carla Massara (216) 514-1400 ext 108 [cmassara@kowitzrealty.com](mailto:cmassara@kowitzrealty.com)

Kowitz & Company Real Estate Group | 216.514.1400 | [www.kowitzrealty.com](http://www.kowitzrealty.com)

## AERIAL

9330-9374 MARKET SQUARE DR, STREETSBORO, OH



Contact Agent:

Carla Massara (216) 514-1400 ext 108 [cmassara@kowitzrealstate.com](mailto:cmassara@kowitzrealstate.com)

Kowitz & Company Real Estate Group | 216.514.1400 | [www.kowitzrealstate.com](http://www.kowitzrealstate.com)

# DEMOGRAPHICS

9330-9374 MARKET SQUARE DR, STREETSBORO, OH

9330 Market Square Dr Streetsboro, OH 44241	1 mi radius	3 mi radius	5 mi radius
<b>Population</b>			
2023 Estimated Population	5,539	18,610	45,400
2028 Projected Population	5,452	18,282	44,810
2020 Census Population	5,401	18,724	45,826
2010 Census Population	5,017	17,442	44,143
Projected Annual Growth 2023 to 2028	-0.3%	-0.4%	-0.3%
Historical Annual Growth 2010 to 2023	0.8%	0.5%	0.2%
2023 Median Age	38.8	38.9	42.7
<b>Households</b>			
2023 Estimated Households	2,481	7,918	17,938
2028 Projected Households	2,421	7,716	17,548
2020 Census Households	2,375	7,858	17,867
2010 Census Households	2,068	7,058	16,664
Projected Annual Growth 2023 to 2028	-0.5%	-0.5%	-0.4%
Historical Annual Growth 2010 to 2023	1.5%	0.9%	0.6%
<b>Race and Ethnicity</b>			
2023 Estimated White	83.7%	83.9%	87.4%
2023 Estimated Black or African American	9.7%	8.7%	5.3%
2023 Estimated Asian or Pacific Islander	2.5%	3.3%	3.3%
2023 Estimated American Indian or Native Alaskan	-	-	-
2023 Estimated Other Races	4.0%	4.0%	3.9%
2023 Estimated Hispanic	3.1%	2.9%	2.8%
<b>Income</b>			
2023 Estimated Average Household Income	\$85,560	\$107,225	\$154,661
2023 Estimated Median Household Income	\$73,896	\$84,774	\$112,285
2023 Estimated Per Capita Income	\$38,385	\$45,650	\$61,193
<b>Education (Age 25+)</b>			
2023 Estimated Elementary (Grade Level 0 to 8)	1.6%	1.7%	1.3%
2023 Estimated Some High School (Grade Level 9 to 11)	7.2%	5.9%	3.7%
2023 Estimated High School Graduate	39.8%	34.0%	24.5%
2023 Estimated Some College	17.2%	16.0%	14.1%
2023 Estimated Associates Degree Only	9.0%	9.2%	7.6%
2023 Estimated Bachelors Degree Only	17.8%	19.6%	27.4%
2023 Estimated Graduate Degree	7.5%	13.7%	21.4%
<b>Business</b>			
2023 Estimated Total Businesses	180	735	1,482
2023 Estimated Total Employees	1,905	12,246	18,945
2023 Estimated Employee Population per Business	10.6	16.7	12.8
2023 Estimated Residential Population per Business	30.8	25.3	30.6

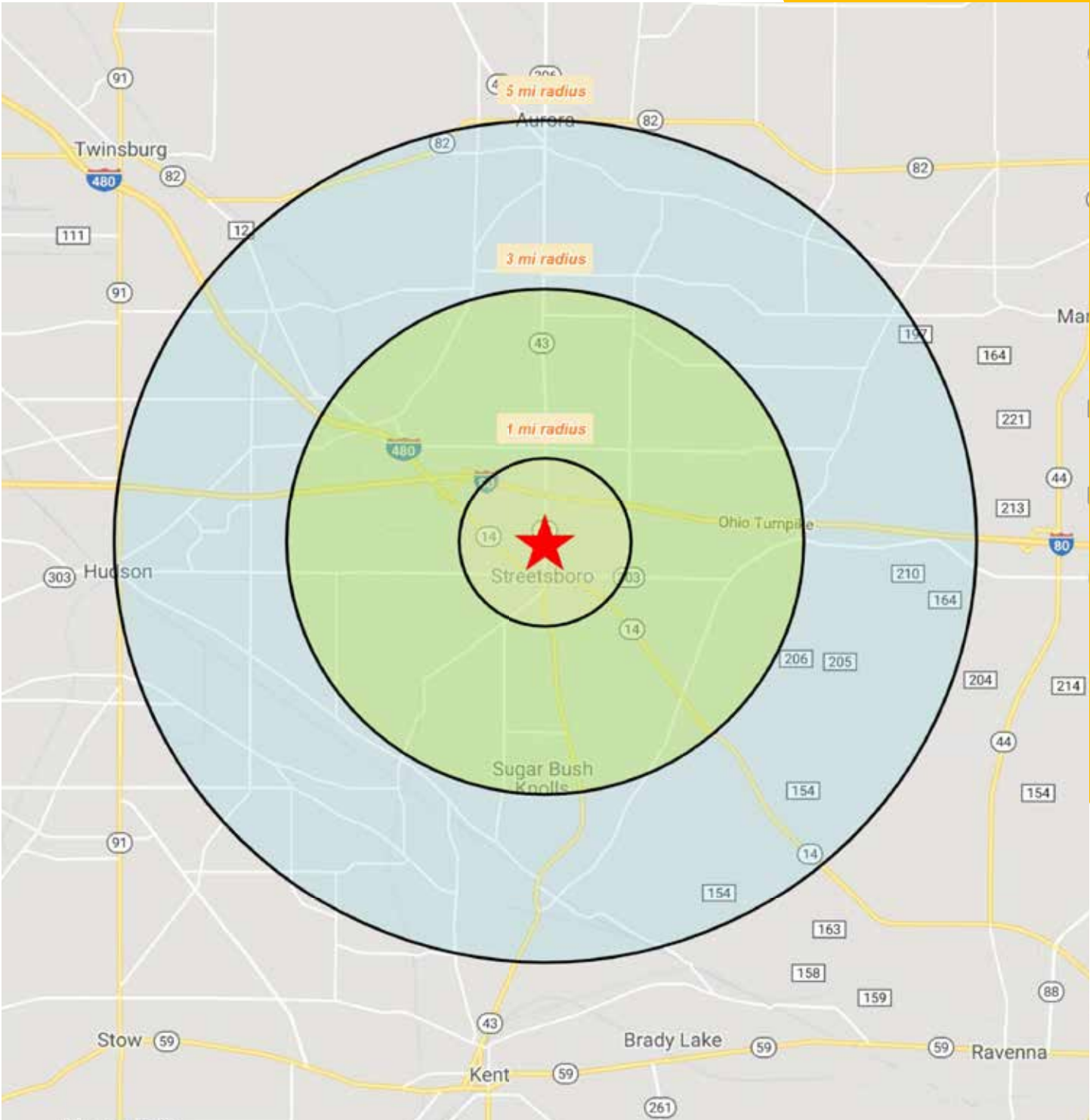
Contact Agent:

Carla Massara (216) 514-1400 ext 108 [cmassara@kowitrealestate.com](mailto:cmassara@kowitrealestate.com)

Kowit & Company Real Estate Group | 216.514.1400 | [www.kowitrealestate.com](http://www.kowitrealestate.com)

# AREA MAP

9330-9374 MARKET SQUARE DR, STREETSBORO, OH



Contact Agent:

Carla Massara (216) 514-1400 ext 108 [cmassara@kowitzrealstate.com](mailto:cmassara@kowitzrealstate.com)

Kowit & Company Real Estate Group | 216.514.1400 | [www.kowitzrealstate.com](http://www.kowitzrealstate.com)